



Advancing Equity through Multi-Sector Collaborations

*Local Health Jurisdictions
2023 California Equity Convening
September 7, 2023*

Presenters: Colin Gutierrez and Holly Nickel

STATE OF EQUITY



STATE OF EQUITY

Moving racial equity and health to the heart of public institutions.

- Mission: To transform public institutions to advance racial and health equity through capacity building, government accountability, and community partnerships.
- Values: Racial Justice, Accountability, Self-determination, Collective Care



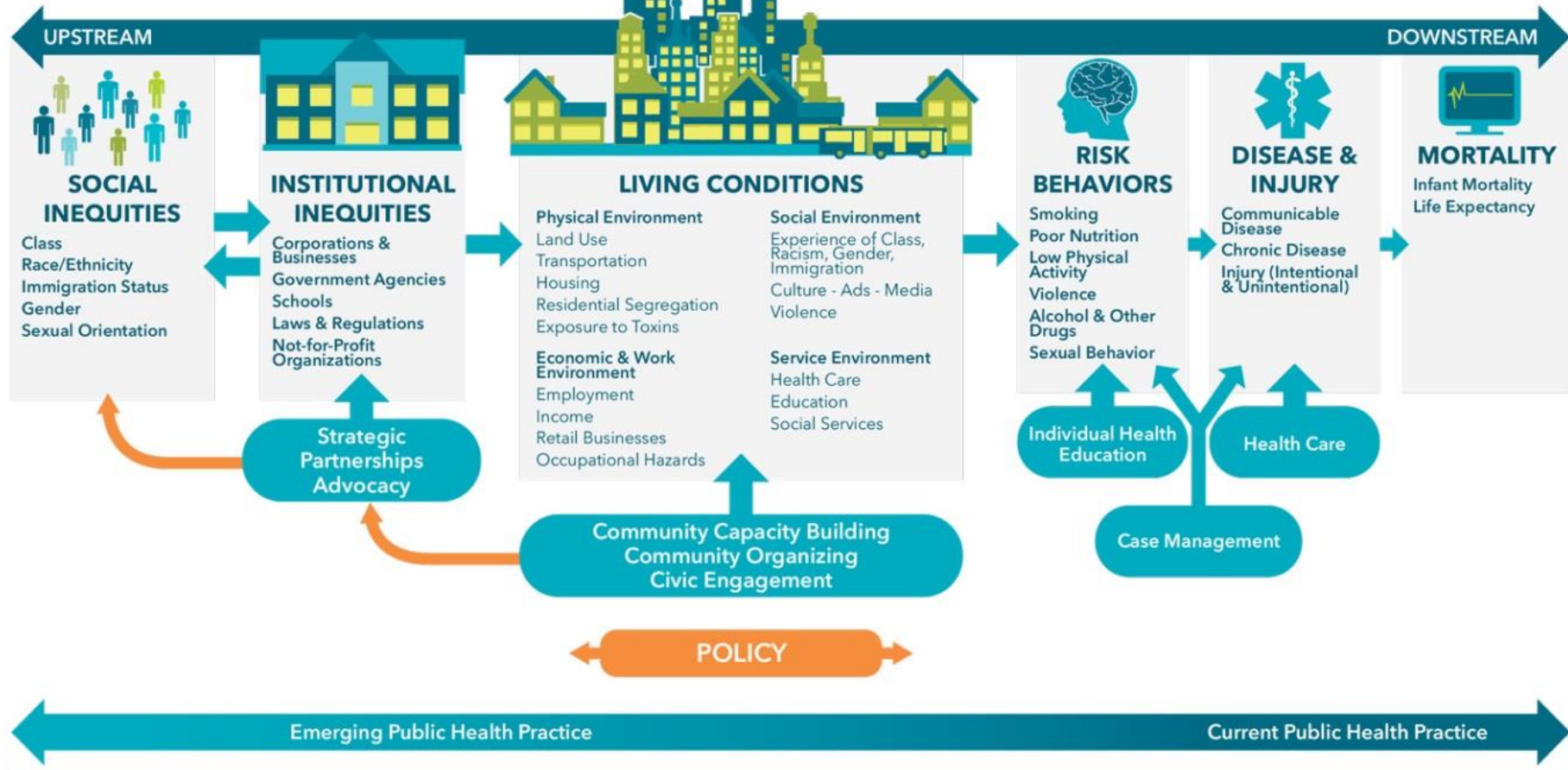
Health in All Policies is...

a collaborative approach to improving the health of *all people* by incorporating health considerations into decision-making across sectors and policy areas.



Source: Rudolph, L., Caplan, J., Ben-Moshe, K., & Dillon, L. (2013). Health in All Policies: A Guide for State and Local Governments. Washington, DC and Oakland, CA: American Public Health Association and Public Health Institute.

A PUBLIC HEALTH FRAMEWORK FOR REDUCING HEALTH INEQUITIES
 BAY AREA REGIONAL HEALTH INEQUITIES INITIATIVE



California Health in All Policies Task Force



The 5 Key Elements of Health in All Policies

1. Promote health, equity, and environmental sustainability
2. Support intersectoral collaboration
3. Benefit multiple partners
4. Engage stakeholders
5. Create structural or procedural change
6. Adaptive

California HiAP as a launch-point for our focus on Racial Equity in all we do

- HiAP provides a mandate and convening structure for government transformation
- Public health makes the case for racial equity as a determinant of health equity
- Inside/outside strategy helps with mobilization:
 - HiAP Task Force
 - Government/nonprofit/philanthropy backbone staff structure
 - Advocacy and local jurisdiction leadership
 - Government Alliance on Race and Equity (GARF) movement

STATE OF EQUITY

SAFE & EQUITABLE COMMUNITIES

- Preventing violence through community-centered, multi-sector policy approaches.
- Engaging partners across government agencies, in local communities, academia, and philanthropy



CAPITOL COLLABORATIVE ON RACE & EQUITY (CCORE)

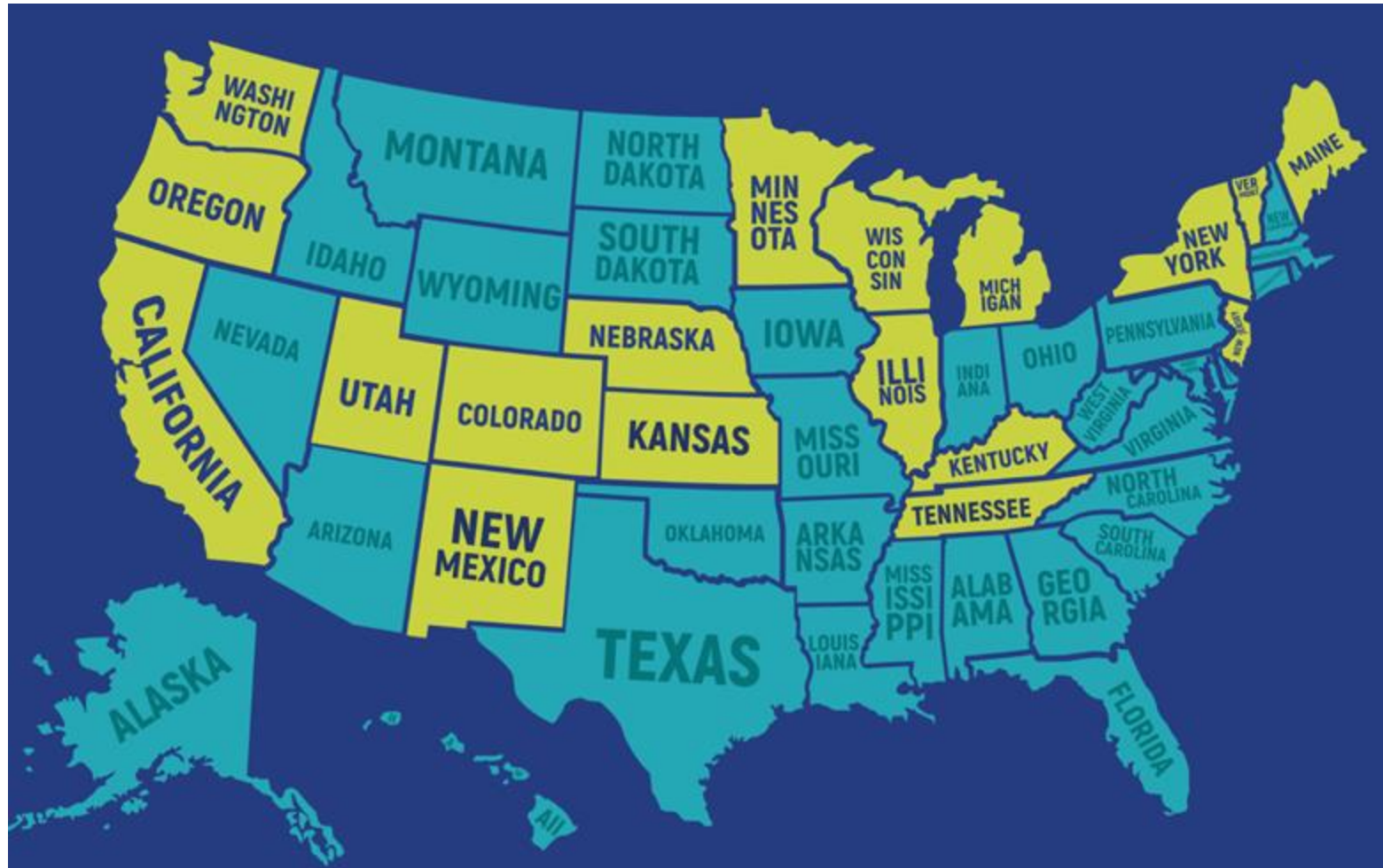
CCORE is a community of California State government entities learning about, planning for, and implementing activities that embed racial equity approaches into institutional culture, policies, and practices.

CCORE Key Features:

- 1) 18-month training cohorts
- 2) Staff team that provides technical assistance, coaching, and support towards system change
- 3) Cross-agency networking, peer exchange, and enterprise-wide executive engagement
- 4) Partnership with GARE



NATIONAL STATES STRATEGY FOR RACIAL EQUITY

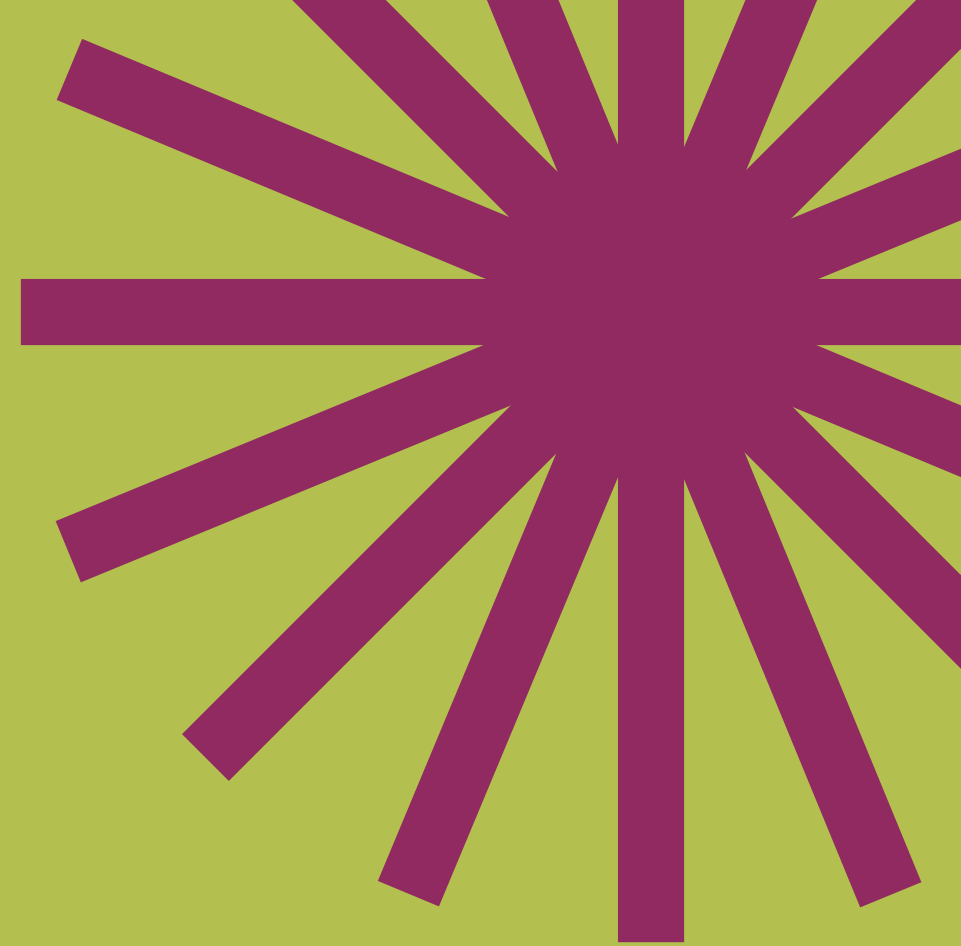


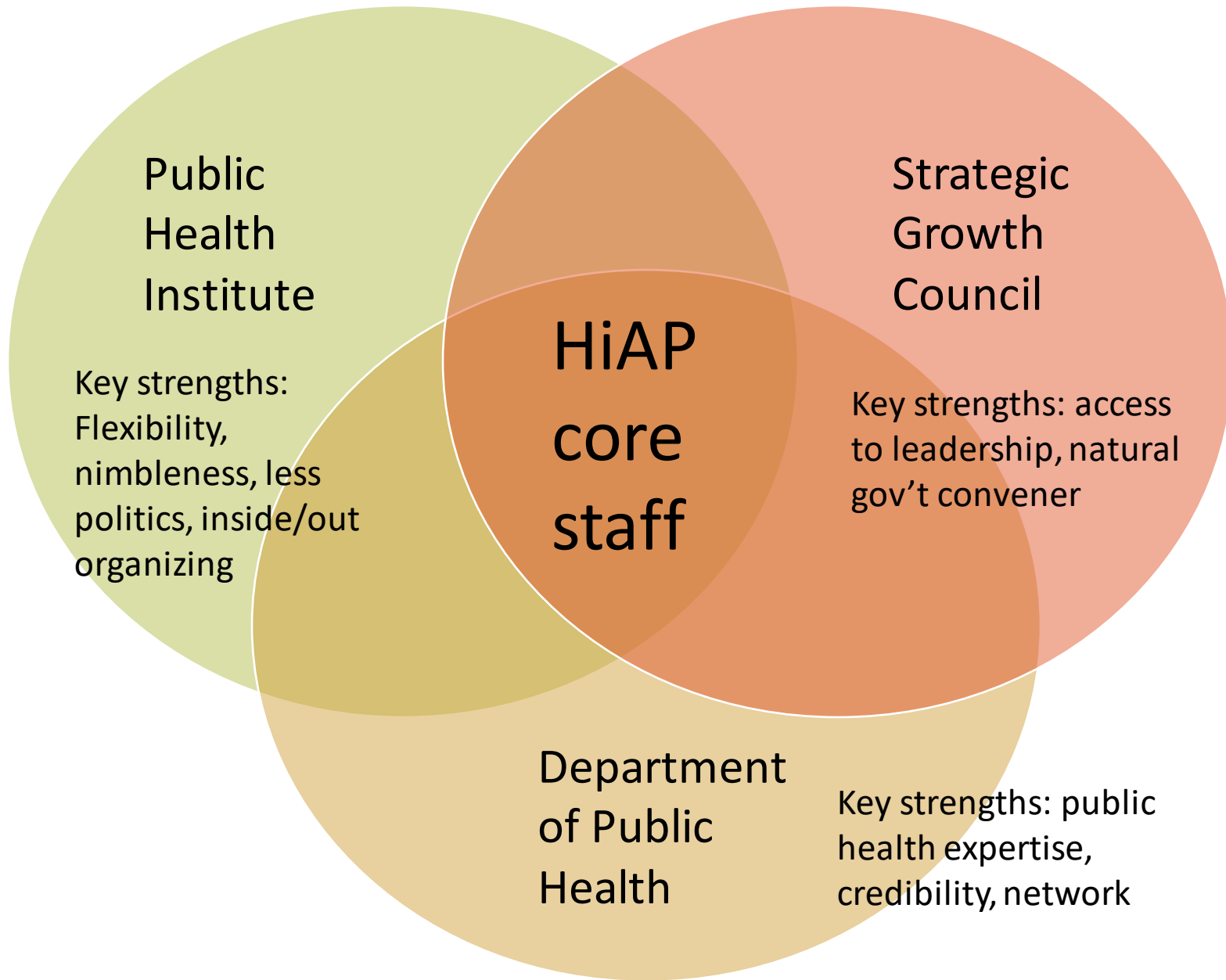
Anchor partners – central to our partnership web



WORKING ACROSS SECTORS

Putting it all together





PARTNERSHIP SECRET SAUCE



CONSENSUS
DECISION-MAKING



FOCUS ON CO-
BENEFITS



TRANSPARENCY



FACE TIME

EMBEDDING EQUITY INTO MULTI-SECTOR PARTNERSHIPS

1. Lead with equity and values
2. It takes something different
3. Organize inside government at all levels
4. Make it easier for community to be a partner and owner
5. Compensate non-government partners
6. Be patient, be persistent
7. Vulnerability!
8. Equity moves at the speed of relationships

BEHIND THE SCENES: LESSONS FROM OUR WORK

- Safe & Equitable Communities
- CCORE
- National States Strategy

TURN AND TALK

STATE OF EQUITY

 **PUBLIC
HEALTH**
INSTITUTE®



TURN TO A NEIGHBOR:

Briefly intro yourselves and discuss these questions:

- What are the successes and challenges you've had with multisectoral partnering?
- What lessons have you learned in your efforts to partner over multiple sectors?

QUESTIONS?

Contact us at: stateofequity@phi.org

Website: Stateofequity.phi.org

STATE OF EQUITY

